

DATA	CODICE	REV.
01/04/2007	8620207	--

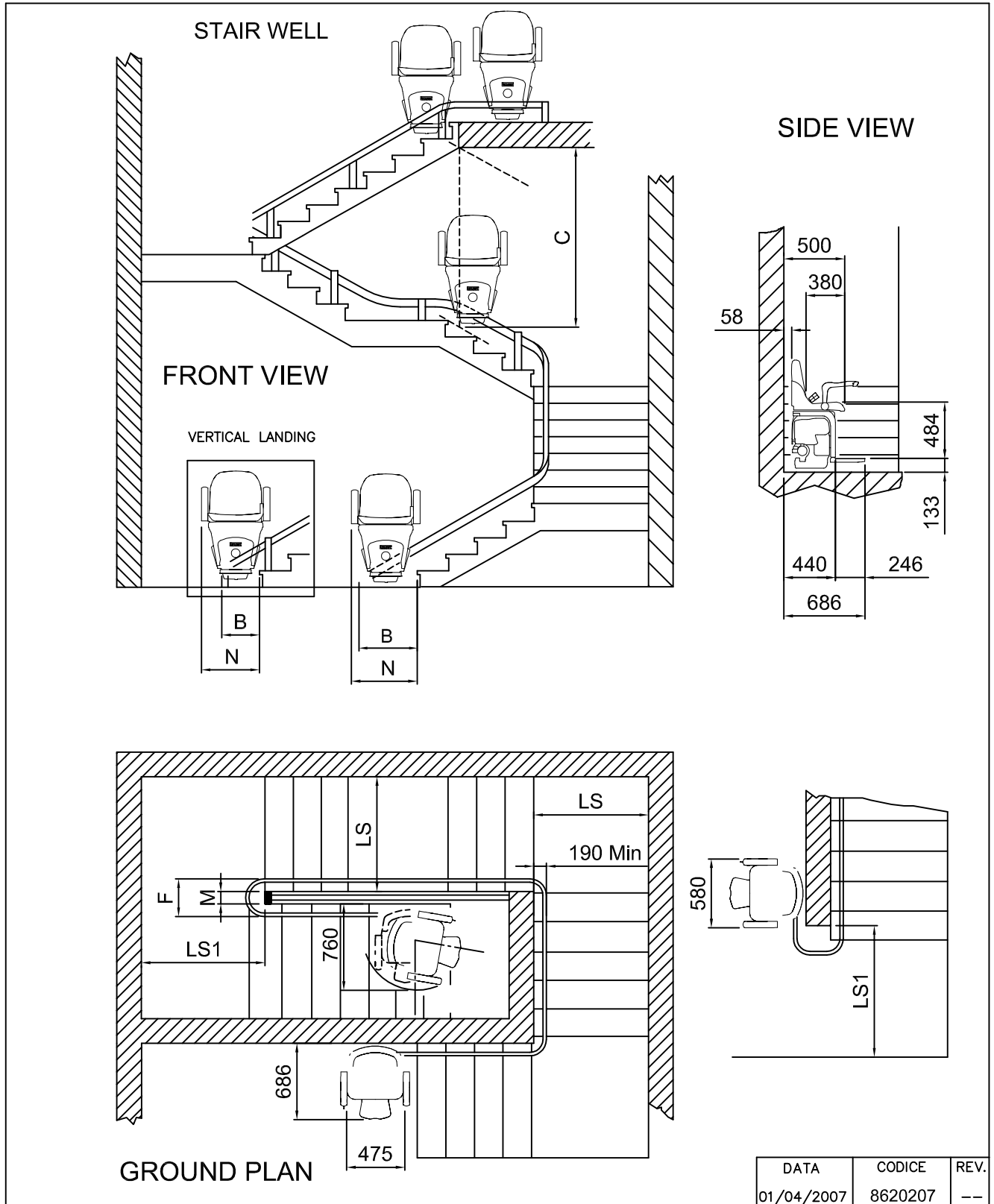
TECHNICAL FEATURES

Rated Load	Power	Power supply	Motor Voltage	Battery charger Power supply	Speed (Max)
125 [daN]	360 [W]	24 [V-DC]	24 [V-cc]	220 [V-AC]	9 [m/min.]

INSTALLATION REQUIREMENTS

LS	STANDARD	740
	FOR UNIT WITH SEAT ROTATED AT 45°	690
C	WITH SEATED PERSON	1800
B	STANDARD	659
	VERTICAL LANDING	256
N	STANDARD	680
	VERTICAL LANDING	573

BASED ON A PERSON WITH AN UPPERLEG LENGTH OF 600 mm



DATA	CODICE	REV.
01/04/2007	8620207	--

TECHNICAL FEATURES

Rated Load	Power	Power supply	Motor Voltage	Battery charger Power supply	Speed (Max)
125 [daN]	360 [W]	24 [V-DC]	24 [V-DC]	220 [V-AC]	9 [m/min.]

INSTALLATION REQUIREMENTS

LS	AT 0°	min.	770	Stair angle	F max	M min	LS1		
	FROM 30° TO 61°	min.	770		0°	850	410	770	
C	WITH SEATED PERSON			min.	1800	30°	640	200	770
					60°	640	200	770	

BASED ON A PERSON WITH AN UPPERLEG LENGTH OF 600 mm